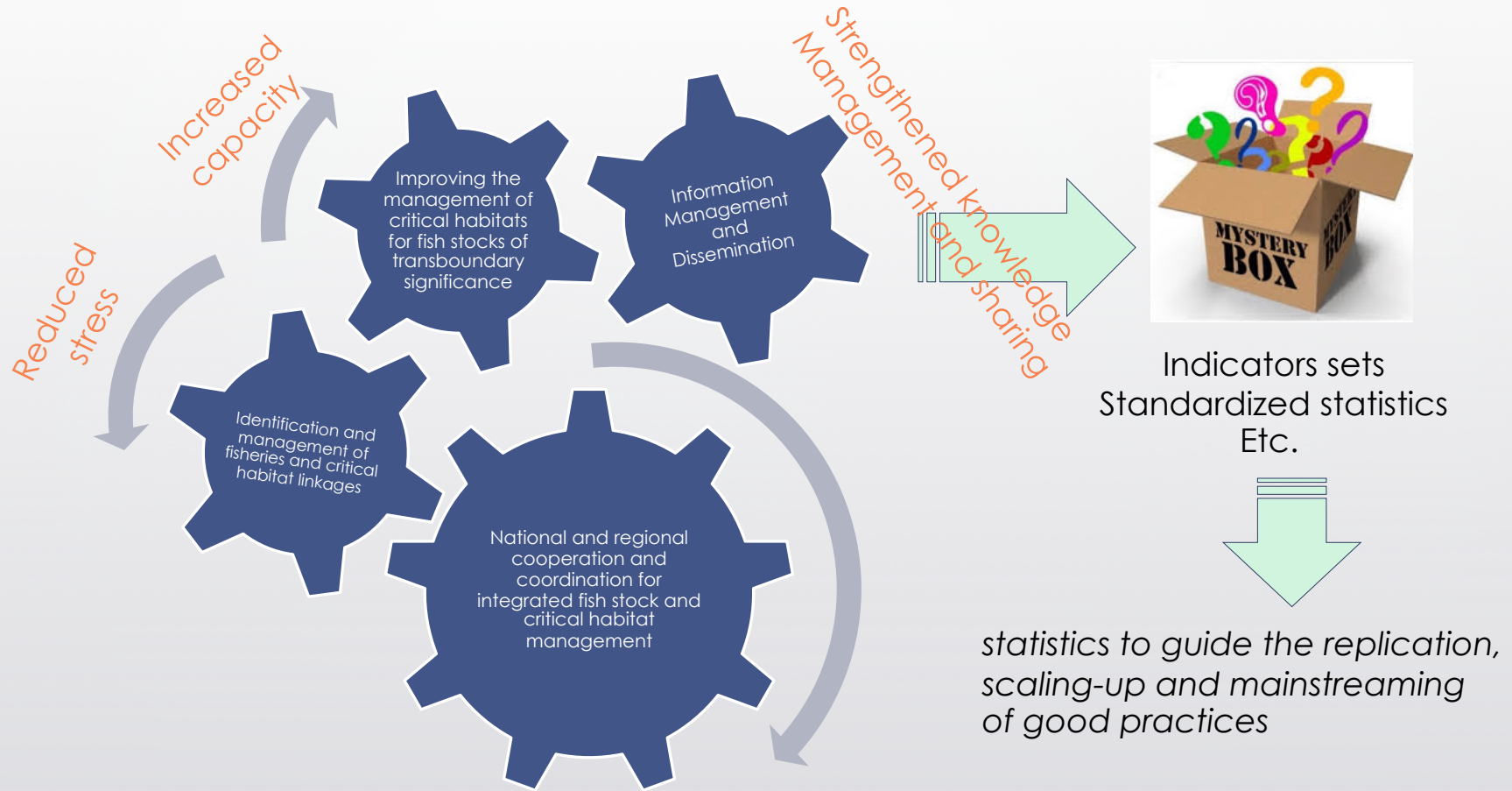




PROGRESS ON INDICATORS FOR MANAGEMENT OF FISHERIES REFUGIA

Presented by : PCU



DEVELOPMENT OF REGIONAL GUIDEBOOK

- ✓ The Regional Meeting on Indicators held in Pattaya, 9th–11th Sep. 2019;
- ✓ Attended by all National Focal Point and Scientific-Technical Focal Point;
- ✓ Through the brain storming: the objectives, key issues/problems following with criteria and indicators are identified covering all 5 dimensions;
- ✓ The objectives of the Indicators are to guide country how to:
 1. **Maintain the fish stock and critical habitat;**
 2. **Satisfy fishing community, social needs now and futures; and**
 3. **Put in place on effective management system**

RESULTS:

- ✓ Agreed SET of Indicators to support management of fisheries Refugia;
- ✓ Agreed Contents of the regional guidebook;
- ✓ Supported the inclusion of standardized methods and analysis in the Guidebook;
- ✓ Agreed Title: “Sustainability Indicators Framework for management of fisheries refugia in the South China sea and Gulf of Thailand”

- I. EXECUTIVE SUMMARY
- II. PREFACE
- III. MESSAGES FROM PARTNERS
- IV. ABBREVIATIONS AND DEFINITIONS
- V. INTRODUCTION AND BACKGROUND
 - A REGIONAL SYSTEM OF FISHERIES *REFUGIA* (2017-2020)
 - LOG-FRAME FOR ESTABLISHMENT OF THE FISHERIES *REFUGIA*
- VI. SUSTAINABILITY AND PURPOSE OF INDICATORS
- VII. INDICATORS FOR SUSTAINABLE MANAGEMENT OF FISHERIES *REFUGIA*
- VIII. ASSESSMENT FRAMEWORK
- IX. DATA COLLECTION AND ANALYSIS NEEDS
- X. ACKNOWLEDGEMENTS
- XI. REFERENCES
- XII. ANNEXES

WAY FORWARD:

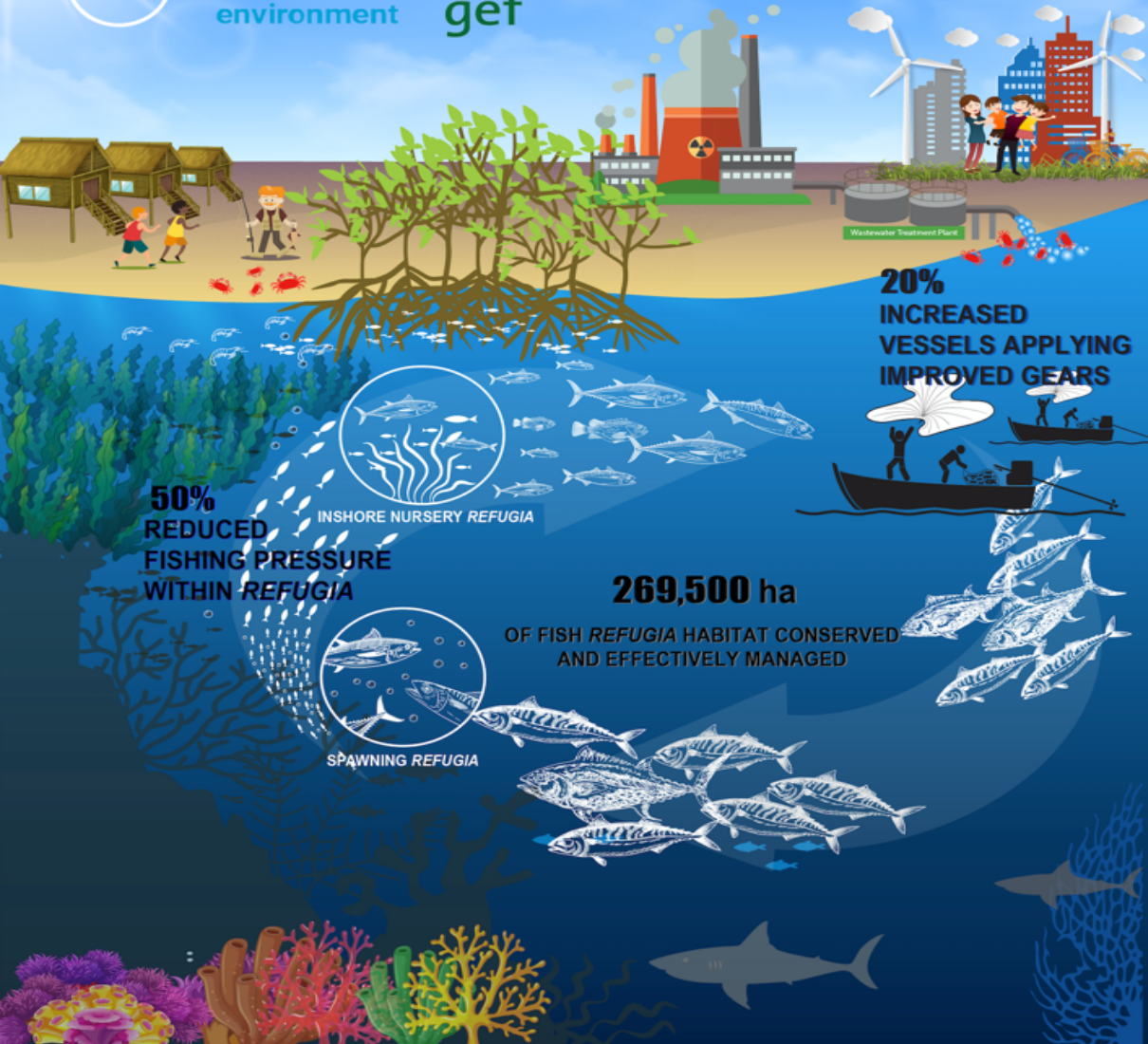
- ✓ PCU will complete the final draft of the Regional Guidebook on “Sustainability Indicators Framework for management of fisheries refugia in the South China sea and Gulf of Thailand” for consideration and approval by the Next PSC in 2020.

REQUIRED CONSIDERATION AND ACTION BY THE PSC:

- ✓ The Committee is requested to provide comments on the draft of Indicator list appeared in the report for further action by the PCU.



UN
environment



Wastewater Treatment Plant

**50%
REDUCED
FISHING PRESSURE
WITHIN REFUGIA**



INSHORE NURSERY REFUGIA



SPAWNING REFUGIA

269,500 ha

**OF FISH REFUGIA HABITAT CONSERVED
AND EFFECTIVELY MANAGED**

**20%
INCREASED
VESSELS APPLYING
IMPROVED GEARS**



Thank you